



For More Information on the solutions we can provide you, contact one of our engineers or send us your specifications:

Our Services

- System Engineering
- System Installation and Upgrades
- Programming Updates
- PLC and PC Controls Integration
- Start-up, Testing, Training
- Documentation
- Maintenance & Technical Support
- Preventive Maintenance Contracts and Agreements
- Instrumentation Calibration
- Pump Equipment Repair
- On-Site Equipment Evaluations

Our Products

- pH Neutralization Systems
- High Purity Water Generation Equipment
- Rainwater recovery Systems
- Chemical Feed Systems
- Pump Transfer Stations
- Wet Process Benches
- Metal Finishing Components and Systems
- Pumps
- Tanks and Mixers
- Process Instrumentation and Controls
- Plastic Valves, Fittings and Tubing

Burt Process Equipment

100 Overlook Drive
Hamden, CT 06514

Corporate Headquarters
Phone: 203-287-1985
Email: edsimpson@burtprocess.com



Mid-Atlantic
Phone: 717-792-6950
Email: joewebb@burtprocess.com

New England
Phone: 978-649-9660
Email: ronbelling@burtprocess.com

New York
Phone: 203-815-0358
Email: andycornell@burtprocess.com

California
Phone: 203-508-1224
Email: markgirgenti@burtprocess.com

BURT PROCESSES EQUIPMENT
High Purity and Corrosion Resistant Fluid Handling Equipment Since 1970

pH PLUS pH Neutralization System



Proven System Design in Pre-Engineered Modules The pH Plus Advantage

Burt Process Equipment's pH Plus Family of advanced pH adjustment modules and systems represent the industries best and most complete line of pH monitoring and control equipment. The pH Plus Series is the result of forty years of experience and engineering development in the field of industrial wastewater treatment.



Corrosion Resistant Durability

The pH Plus Series is designed for years of uninterrupted service with minimal maintenance. All components are selected for use in highly corrosive atmospheres with NEMA 4X rating on all enclosures. All materials in contact with solution are selected for maximum range of chemical compatibility and temperature extremes. Chances are a Burt Process pH adjustment module is currently being used in a similar application to yours.

Compact Design

The advantage of Burt Process Equipment's proprietary mix tank design is increased efficiency and reduction of space required to consistently meet your regulatory requirements for pH discharge limits. The pH Plus Series provides full bidirectional proportional control over the full pH range and is designed for continuous flow or batching operations. The rugged cabinet style module is well suited to industrial waste treatment facilities or laboratory environments.

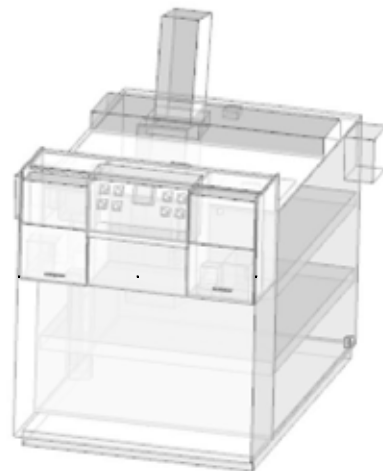
Reliability and Performance

pH Plus systems are designed for long trouble free service backed by Burt Process Equipment's forty years of experience in the design of pH adjustment systems and the hundreds of successful applications throughout the United States. Every module includes Burt Process Equipment's one year component replacement guarantee to assure uninterrupted performance and assured regulatory compliance.

Simplicity and Safety

Burt Process Equipment designs for simplicity and safety all the pH Plus Series of modules and systems. Custom designed alarm annunciator panels indicate any parameter that is out of specification before it becomes a problem. Chemical reagent storage tanks have built-in double containment for added safety and compliance. Alarm functions include low and high pH and low level in reagent tanks. Optional metering directly from reagent carboys is a standard feature of the pH Plus system.

Simple Reliable Compliance in One Compact and Affordable Module

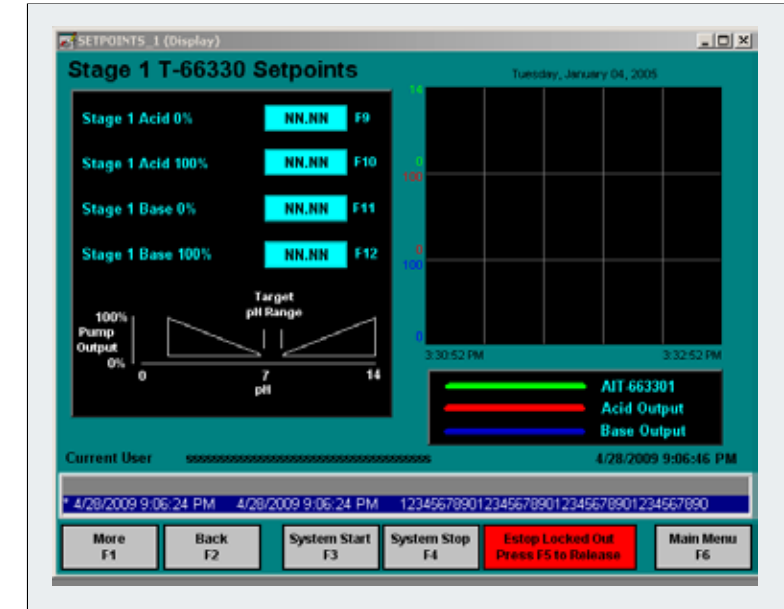


System Features

- PLC/HMI Control For Setpoints and Status
- Customer Specified PLC/HMI Capabilities
- Optional UL508A Listed Controls

Available Options

- PHX Single Reagent Systems
- Flow Monitoring Equipment
- Batch Collection Tanks
- Pump Transfer Stations
- Liquid Level Controllers
- Secondary Containment



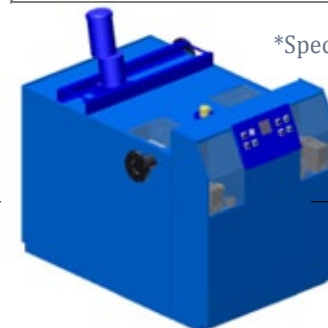
HMI Screenshot

p H P L U S.

pH PLUS Continuous Flow and Batch Treatment Modules

MODEL	PHX-100	PHX-200	PHX-300	PHX-400	PHX-500	
Continuous Flow Capacity (Nominal GPM)	10	20	30	40	50	
Mix Tank Volume (Gal.)	100	200	300	400	500	
Reagent Tanks Volume (Gal.)	20	20	20	30	30	
Reagent Pumps Capacity	5.0	5.0	5.0	10.0	10.0	
Reaction Mixer (HP)	0.25	0.25	0.25	0.25	0.25	
Dimensions (ft.-in.)	Length A	2'-0"	2'-11.5"	3'-11.5"	5'-4"	6'-4"
	Width B	4'-1"	4'-1"	4'-1"	4'-1"	4'-1"
	Height C	5'-9"	5'-9"	5'-9"	5'-9"	5'-9"
Electrical Power (Amps)	12.0	12.0	12.0	12.0	12.0	
Weight (lbs.)	Wet	1290	2275	3235	4220	5205
	Dry	375	425	490	560	630

*Specify suffix-EM for effluent pH monitor and 7-day circular chart recorder. Example: Model PHX-200-EM



1-877-742-2878

Web site: www.burtsystems.com